

## **HANDS SOME FEET - TECHNICAL RIDER for indoor venues**

handssomefeet@gmail.com  
+35840733073 (Liisa, FI)  
+358453168102 (Jeromy, FI)  
[www.handssomefeet.com](http://www.handssomefeet.com)

### **GENERAL INFORMATION**

- The company requires 2 technicians for the setup of the sound and lights, who are familiar with the infrastructure of the venue. During the performance, the presence of one technician is sufficient.
- Sound and light control desk, should be situated behind the audience.

### **PLANNING**

- ARRIVAL 9 hours before the showtime or the day before
- BUILD-UP 5 hours
- PERFORMANCE 50 minutes
  - if more than one performance a day, minimum 2 hours in between the performances
  - maximum 2 performances a day
- BUILD DOWN 1,5 hours

### **STAGE SPACE**

- DIMENSIONS 9m wide x 8m deep
- AERIAL SPACE Ideally 7m. Absolute minimum is 5m below the light truss/lights.
- COURTAINS Italian style black box. Minimum 2 legs per side and a minimum passage of 80cm behind the backdrop.
- FLOORING Black dance carpet
- ANCHORING Two 2000kg WLL attachment points required behind the scenes on the ground or on the wall at a maximum height of 50cm of the floor. Placement approximately in the centre of the stage (depth and width) at a minimum distance of 9m and maximum 16m apart. If the venue has no suitable attachment points, the performance can also be performed with a self-standing tight wire. (see page 3/5)

### **LIGHTS** (see page 5/5)

- 18 graduated circuits of minimum 2kW
- 2 x PAR 64 CP62
- 1 x F1
- 15 x PC 1kW with shutters
- 2 x Cutout 1kW 614 with knives
- 2 x 1kW 613 cutter with knives and gobo holder
- 1 x fog machine
- Gelatines R114 R119 R132 (see plan, page 5/5)
- 5-pin dmx connection
- Blue lights for the backstage

### **SOUND**

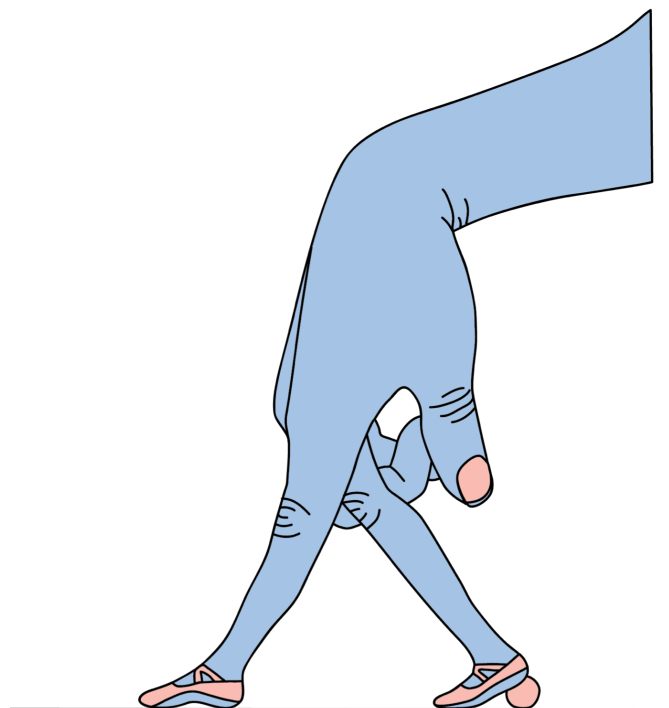
- A good audio system adapted for performance space
- 2 good quality monitors
- Mixing table: min 2 LINE and 2 MIC
- 2x XLR cable
- The copyright of the music will be paid by the organiser, playlist on request.
- The company arrives with:
  - 2 microphones (1 vocal microphone and 1 piezo capsule)
  - 1 computer

## TRAVEL AND ACCOMMODATION

TRAVEL	Costs reimbursed by the organiser. In Europe: by car, 0,60 euros / km
ACCOMMODATION	Three people. To be supplied in instances where the return/arrival of artists on same day is not possible due to distance, or multiple show days are planned over a certain amount of days. In this case breakfast, lunch and dinner are provided by the organiser.
FOOD	-1 gluten-free and vegetarian -2 vegetarians - Meal provided no later than three hours before the showtime - Snacks, coffee and tea etc. are always welcome

## OTHER

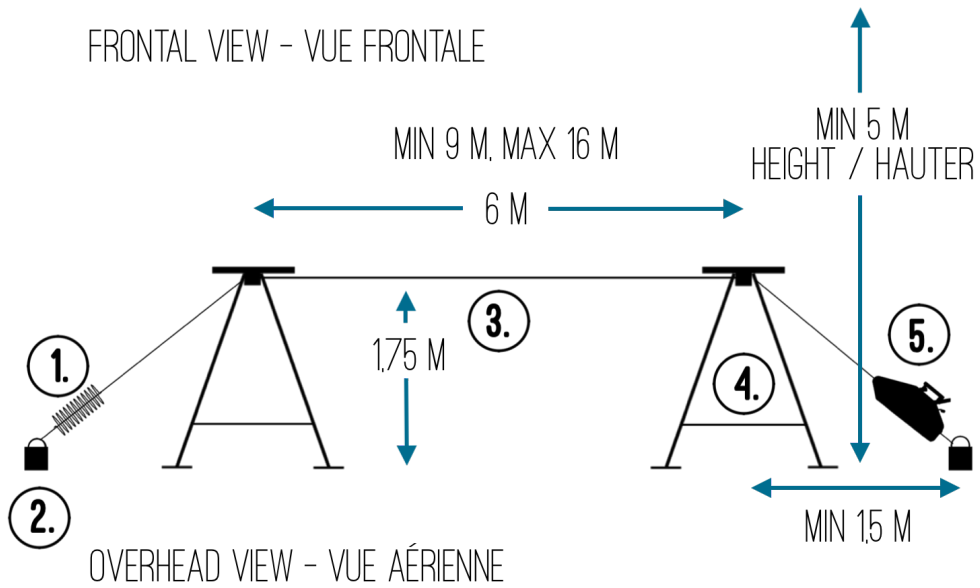
BACKSTAGE	Warm and secure backstage close to the venue, with a mirror, good lighting, electricity, an iron, access to water and toilet.
PARKING	The organiser provides a secure parking space for one van (6m long and 2,8m high)
ON TOUR	Two artists and a technician. Occasionally a producer.



HANDS SOME FEET  
*circus company*

## FICHE TECHNIQUE FIL DE FER · TECHNICAL RIDER TIGHTWIRE

FRONTAL VIEW - VUE FRONTALE

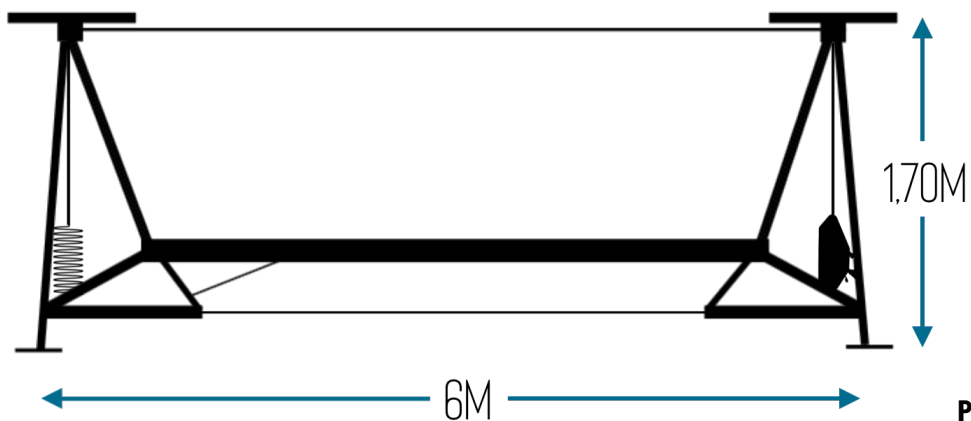


OVERHEAD VIEW - VUE AÉRIENNE



1. COMPRESSION SPRING / RESSORT
2. ANCHOR POINT / POINT D'ACCROCHE ( MIN 1,5T WLL )
3. WALKING WIRE / LE FIL
4. A-FRAME / LE CADRE
5. CABLE WINCH / TIRFOR

## FIL AUTONOME - SELF STANDING TIGHTWIRE





**EXAMPLES OF ATTACHMENT POINTS FOR TIGHTWIRE**



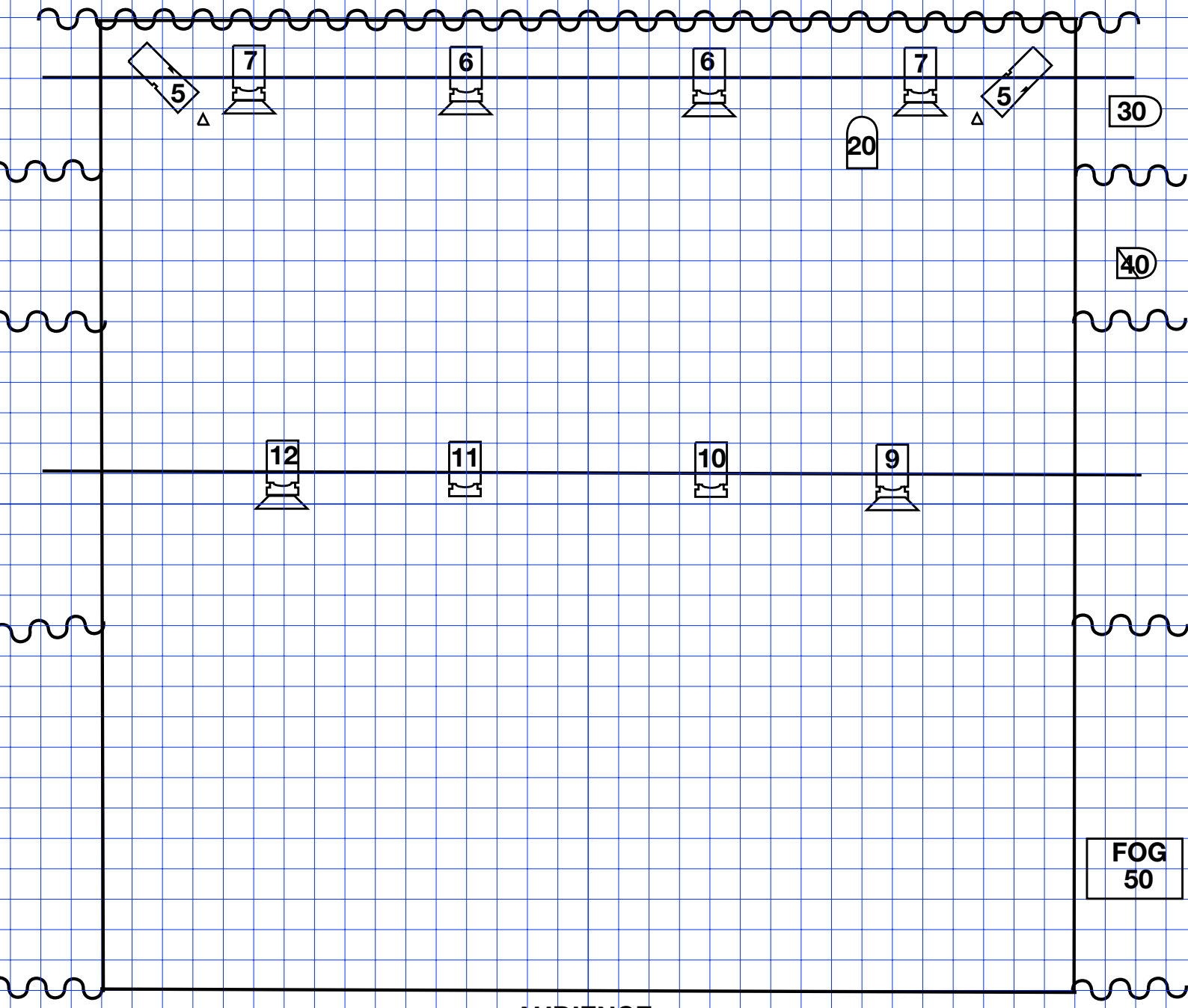
# HANDS SOME FEET

stage : min 8 x 8 M


High : min 5 M

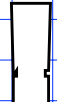
Floor : black dance floor

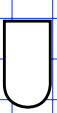
1M

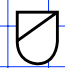


 PC 1Kw x15

 profile 613SX x 2 + GOBO

 profile 614 SX x 2

 PAR 64 CP 61 x 2

 F1 x 1

 fog machine